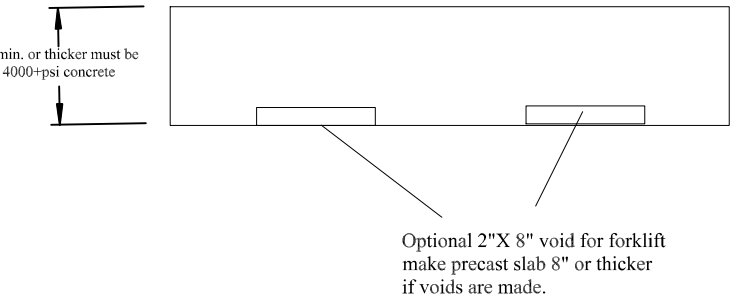
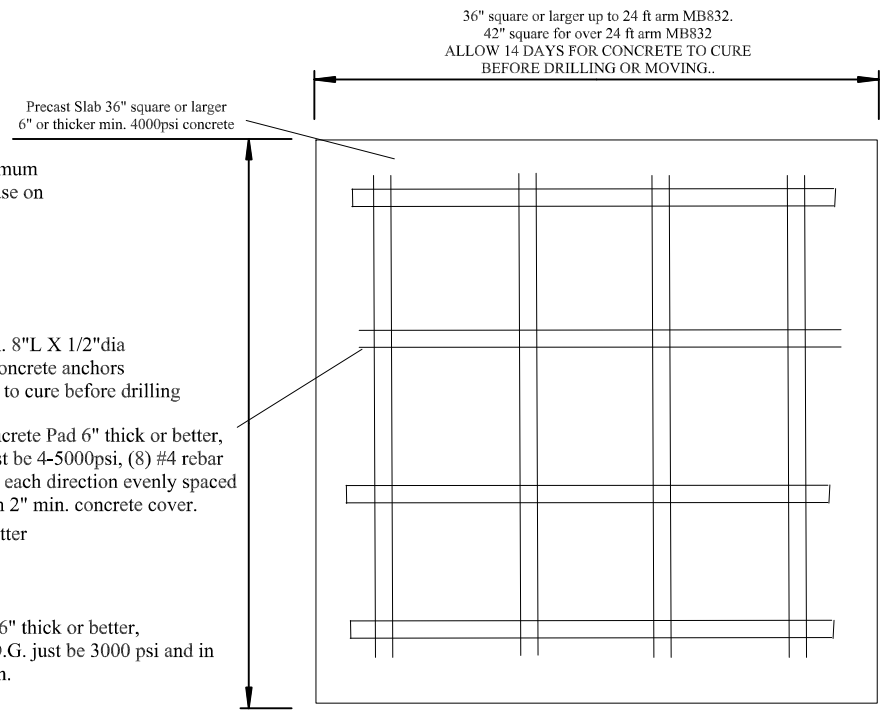


In-Ground MB Foundation Detail



Moveable On-the-Ground MB Foundation Detail

NOTE: If J bolts are used it is strongly recommended that a 3/4" plywood template is made from the actual MB unit to assure a perfect fit. The bolt hole pattern may vary slightly

CAUTION: This detail is meant as a minimum guideline. Soil conditions may vary greatly from site to site causing a possible failure. If you need further specifications, consult a civil engineer.

MB832 Foundation Detail		
All dimensions subject to change without notice.		
Scale: None	10/06/2005	REV 002